



# KAPPARA VILLAS

proposal

company profile

location

block plan

international examples

program

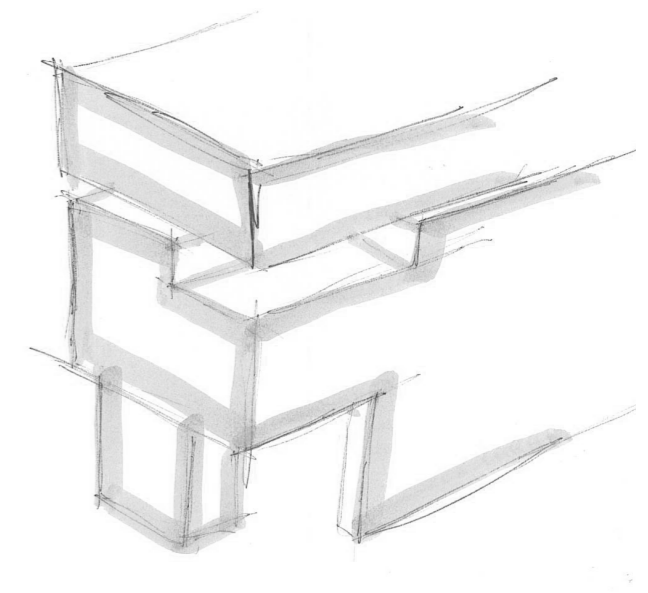
methodology

material palette

visuals

plans | all levels

3dm contact



The intent of this document is to present the design for 2 luxury semi-detached houses located on Triq G. Despott Kappara

The villas were conceived as a series of pure rectangular volumes placed upon a plinth. From the arrangement of volumes, the formation of openings and indentations result into the generation of the whole form. Each villa is designed in the same methodology, yet differs in the way the subtractions are applied to the form. The intention was to create a playful interpretation for each villa whilst still reading as one architectural composition.



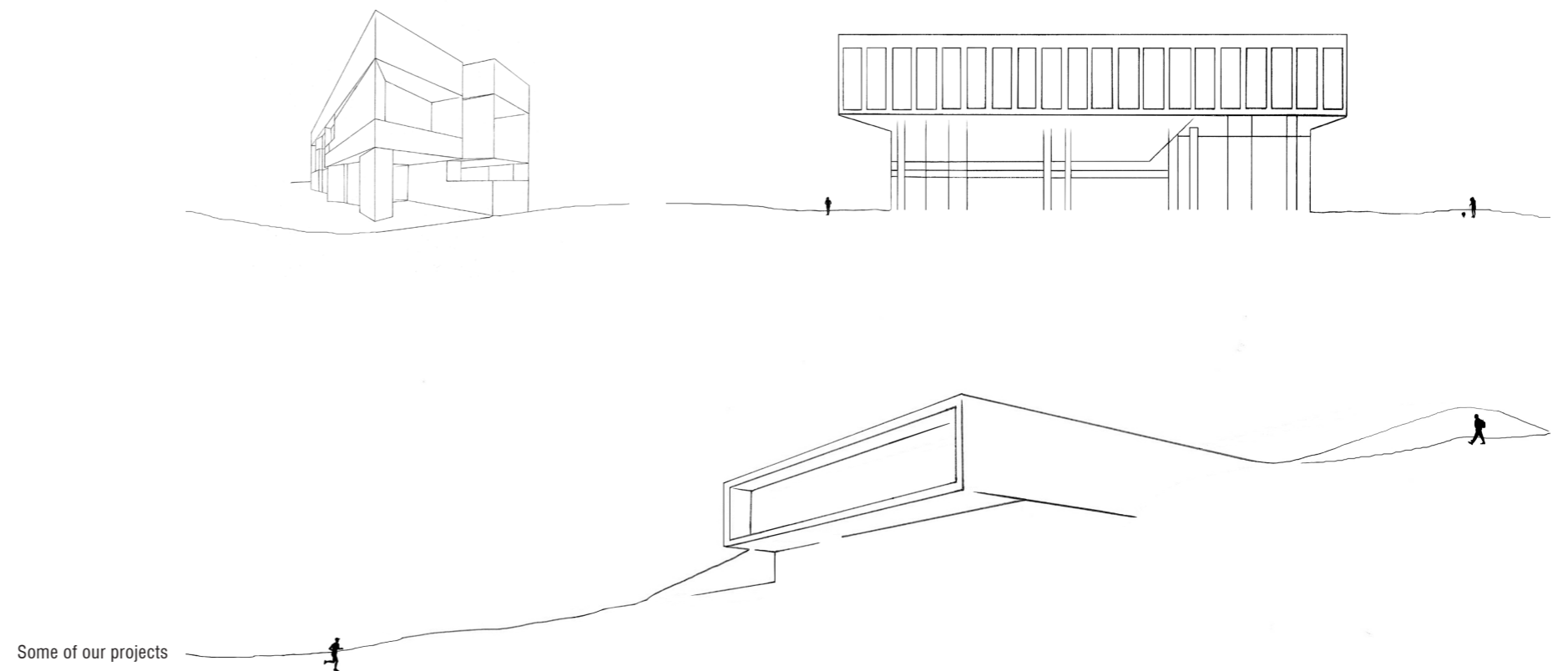
# 3DM ARCHITECTURE

---

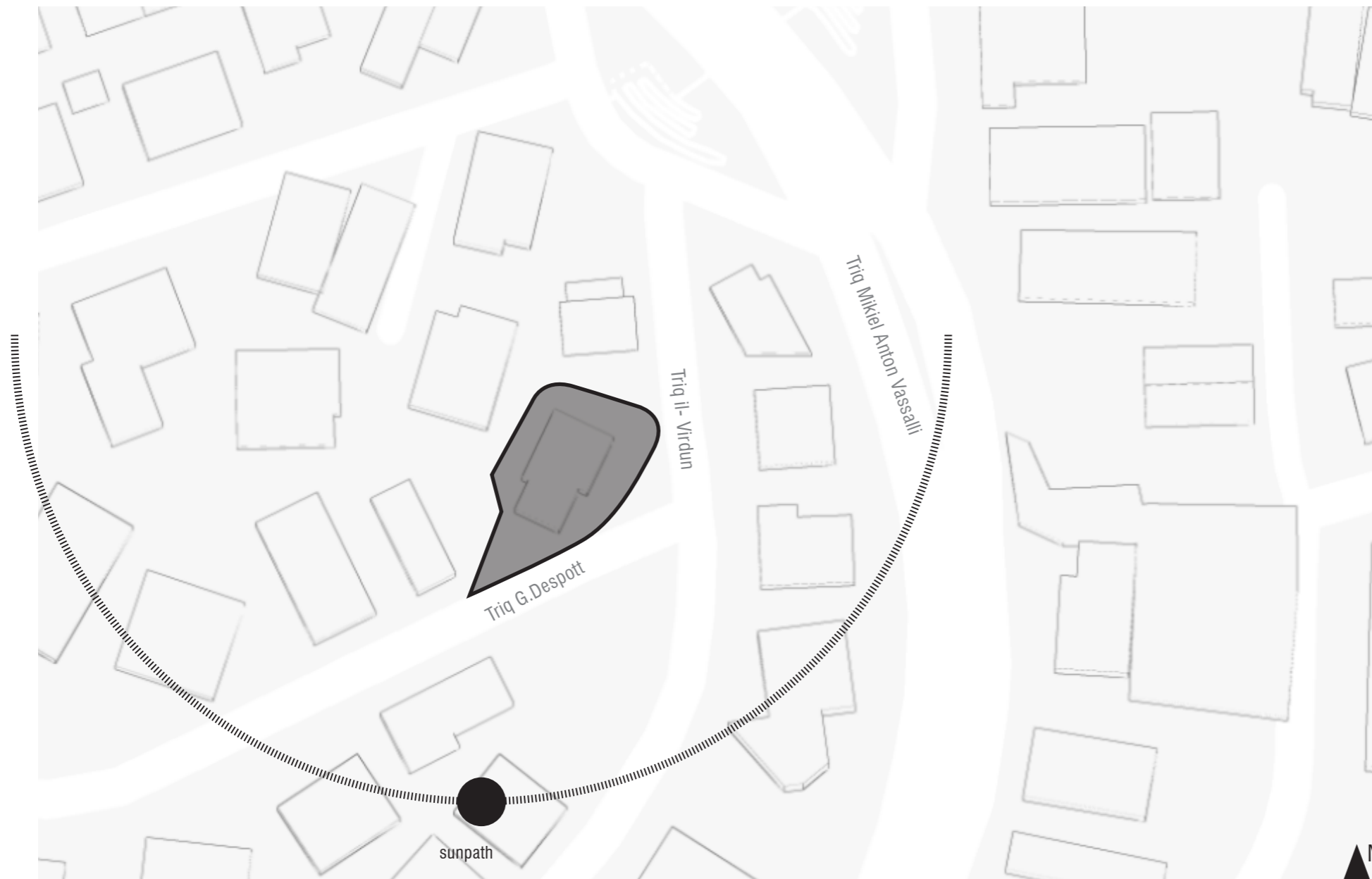
3DM Architecture is an architectural design studio based in Malta that has been active in the field of architecture and interior projects. We are a forward-thinking team that combines knowledge, experience, and creativity in our work.

We at 3DM believe in a comprehensive holistic design approach, which brings together different specialisations that are normally considered as separate. Our team pays close attention to detail when creating geometric forms, selecting materials, and when exploring the interplay of light and shadow.

Our projects are treated with utmost care, starting from their conceptual beginnings, throughout construction, and up to completion.



# LOCATION



The 2 semi-detached villas are situated with frontages along Triq G. Despott and Triq il-Virdun. The Site is located within a dense urban context upon a valley. The site provides an opportunity to tap into the unique site footprint to unfold its potential.



# BLOCK PLAN - AREAS

## villa 1

site area	240sqm
total internal GFA	346sqm
total external GFA	81sqm
landscaping	62sqm

## villa 2

site area	238sqm
total internal GFA	333sqm
total external GFA	110sqm
landscaping	63sqm

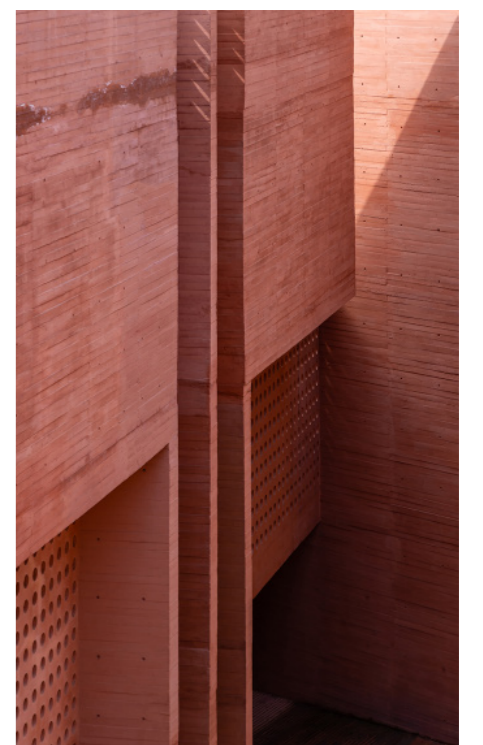
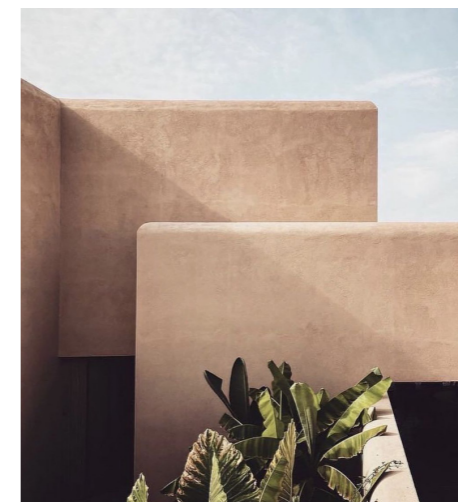
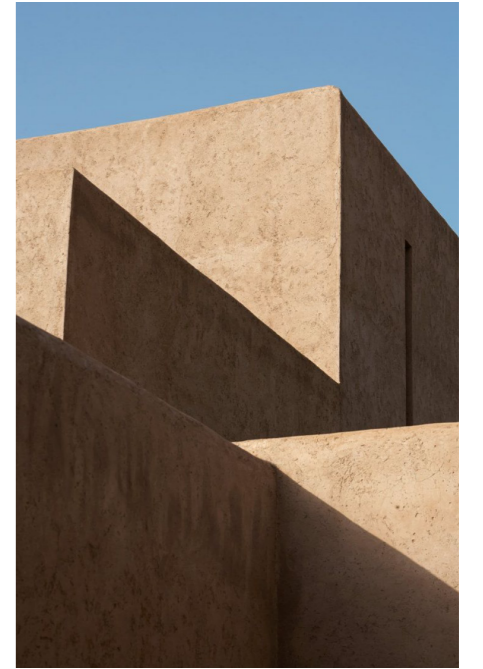


18 Sep 24  
KPR06-C  
D\_01.rev00

not to scale 



# INTERNATIONAL EXAMPLES





# PROGRAM

---



**L3**

laundry & drying area  
PV & services area  
jacuzzi area

**L2**

master bedroom with ensuite  
(+ walk-in wardrobe)  
2 secondary bedrooms with ensuite

**L1**

kitchen | living | dining  
guest bathroom  
outdoor area with pool  
outdoor bathroom

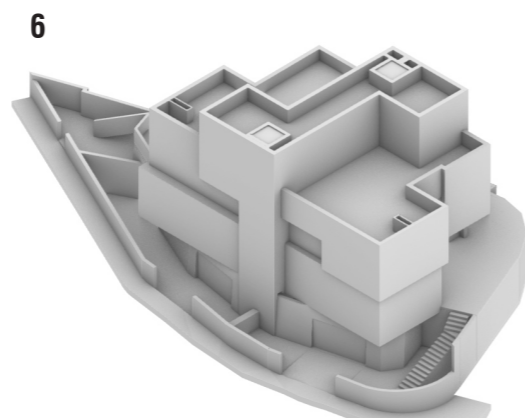
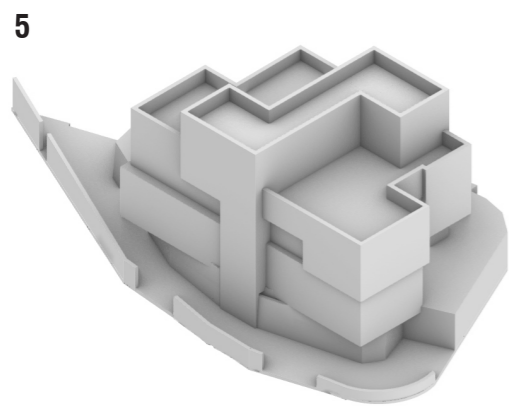
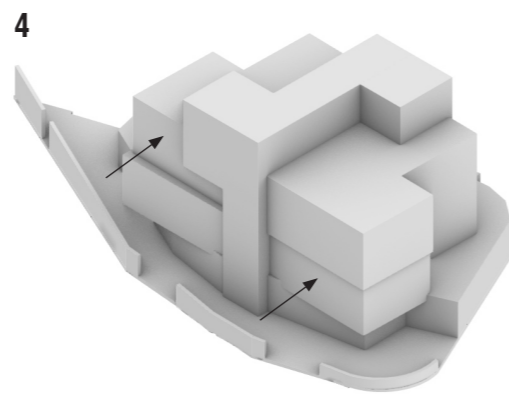
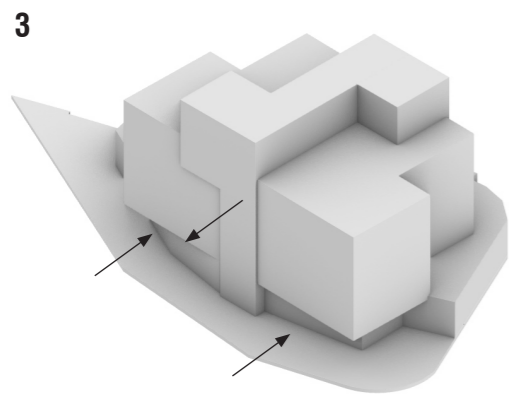
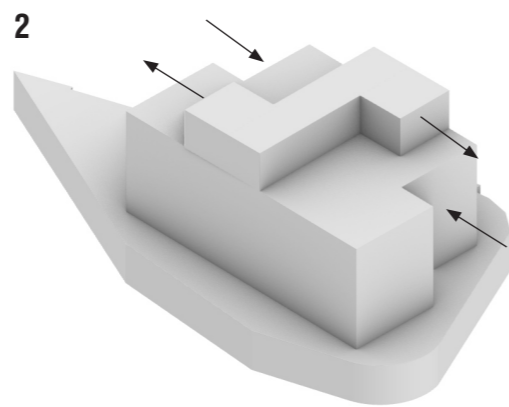
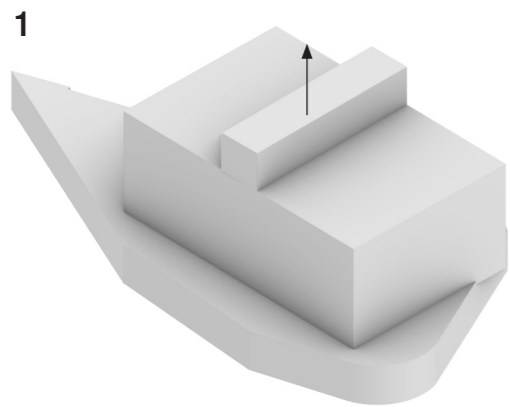
**L0**

2/3 car garage  
games room | gym  
stores | service area  
pool house  
pool  
balance tank & reservoir  
pump room  
access to garages



# METHODOLOGY

---



reducing massing impact through:  
- materiality and shadow gap detailing, creating a clear distinction between volumes  
- reducing volume at ground floor, providing a cantilever effect



# MATERIAL PALETTE

---

**L1 & L2** rough beige rendering  
black coloured aluminium

---

**L0** hardstone flooring  
grass blocks flooring  
black coloured aluminium





# VISUALS

---



# VISUALS

---





# VISUALS

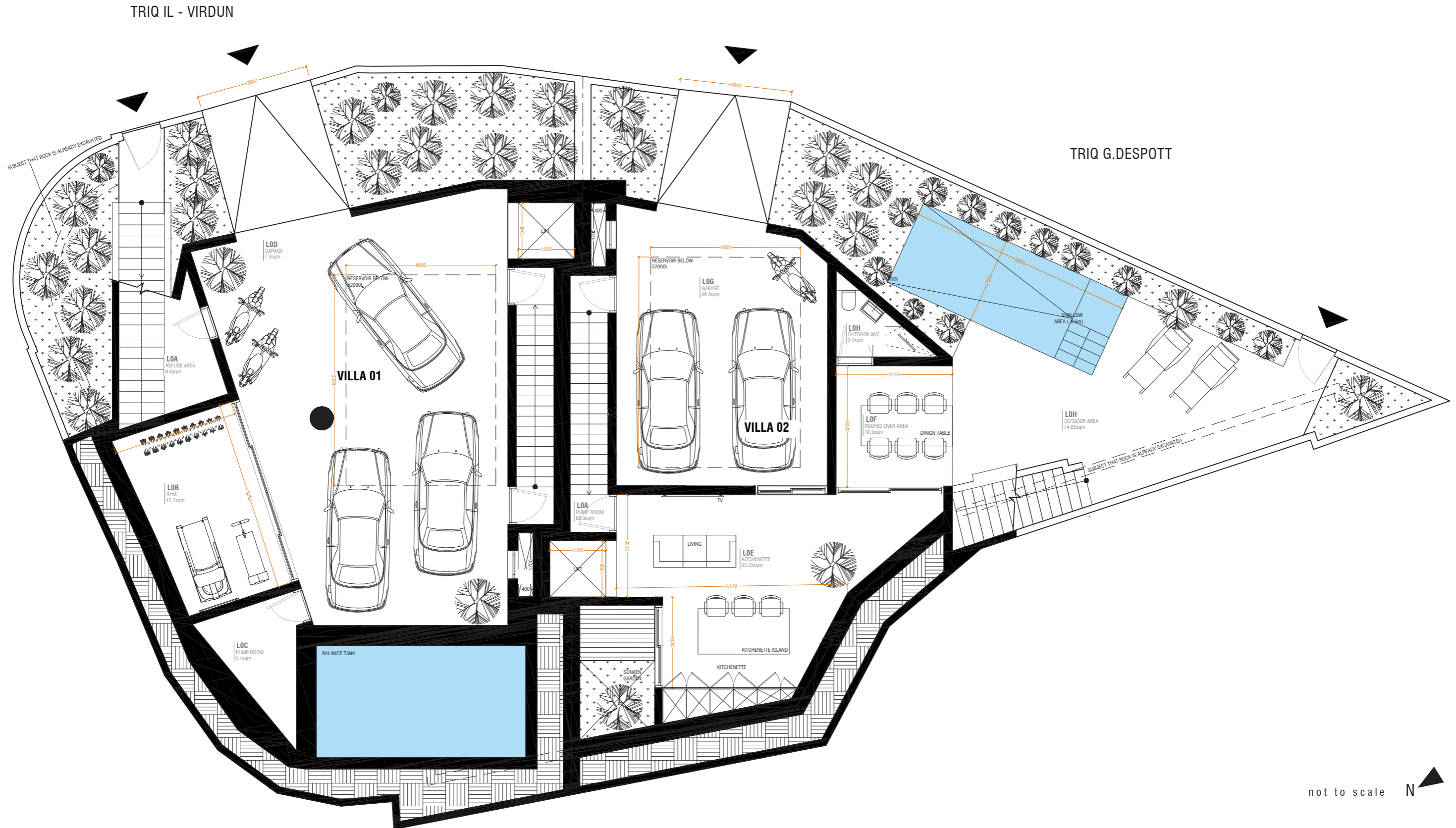
---



PLANS - ALL VILLAS

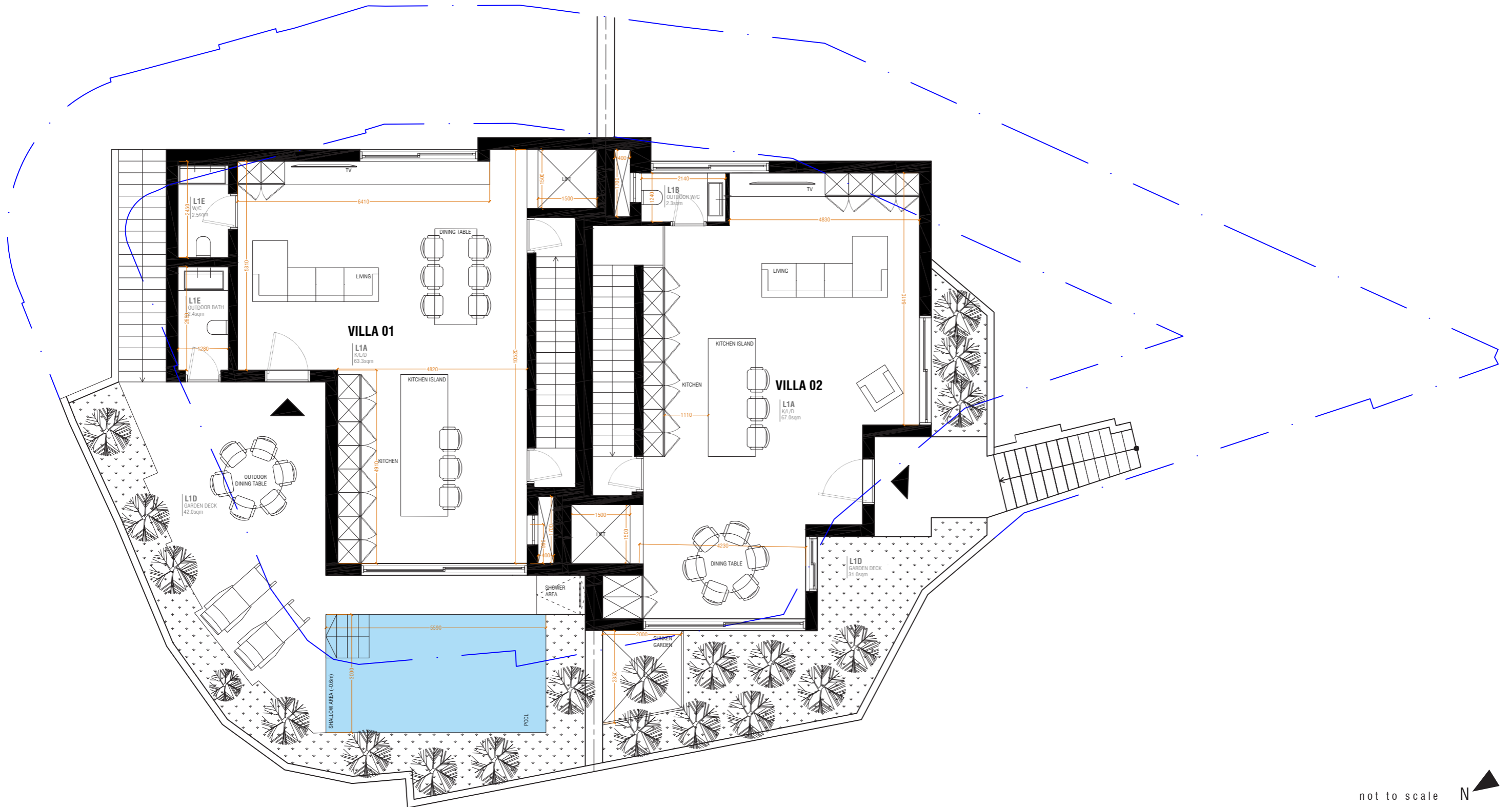


# LEVEL 0

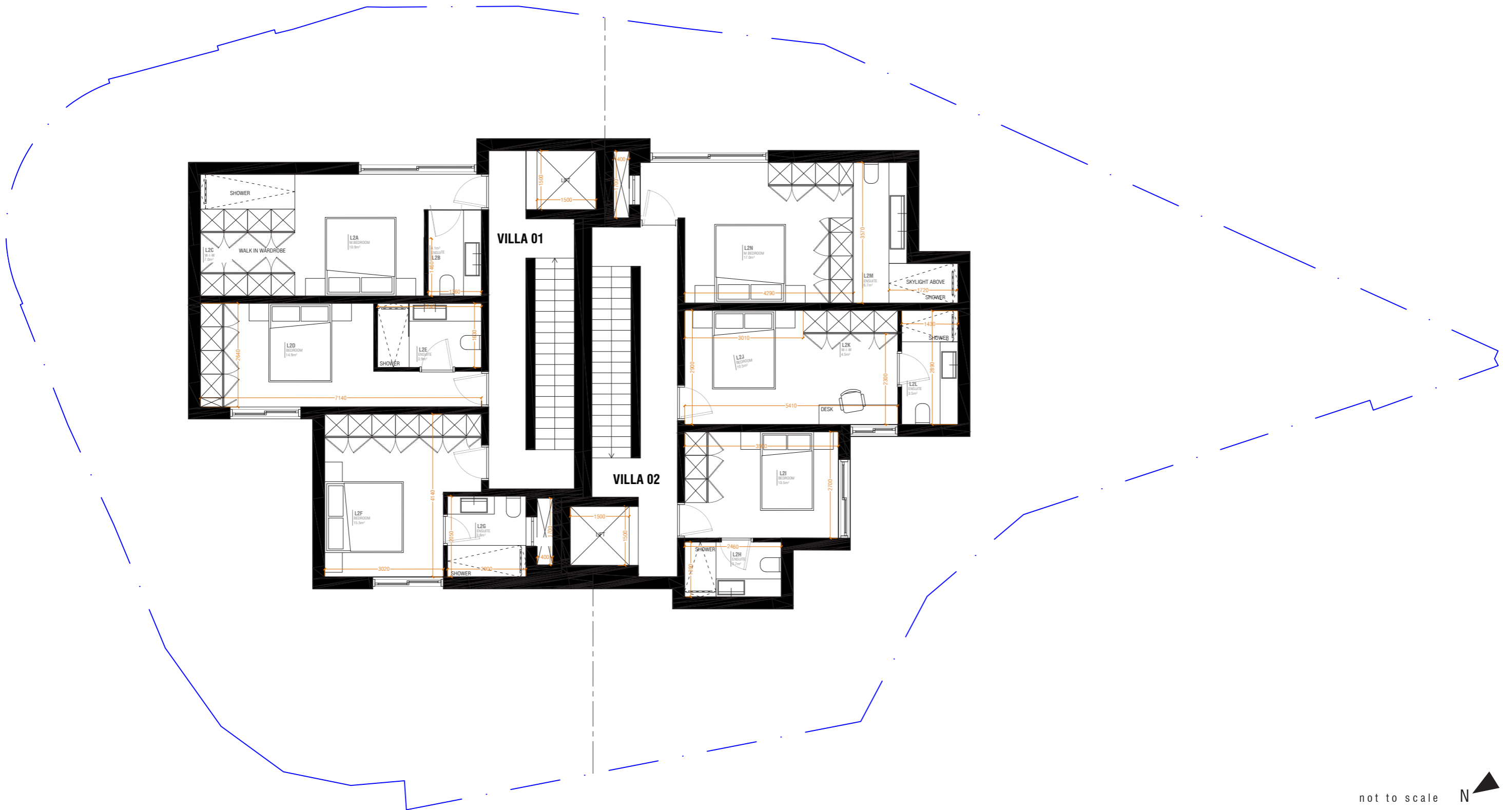


not to scale N

# LEVEL 1

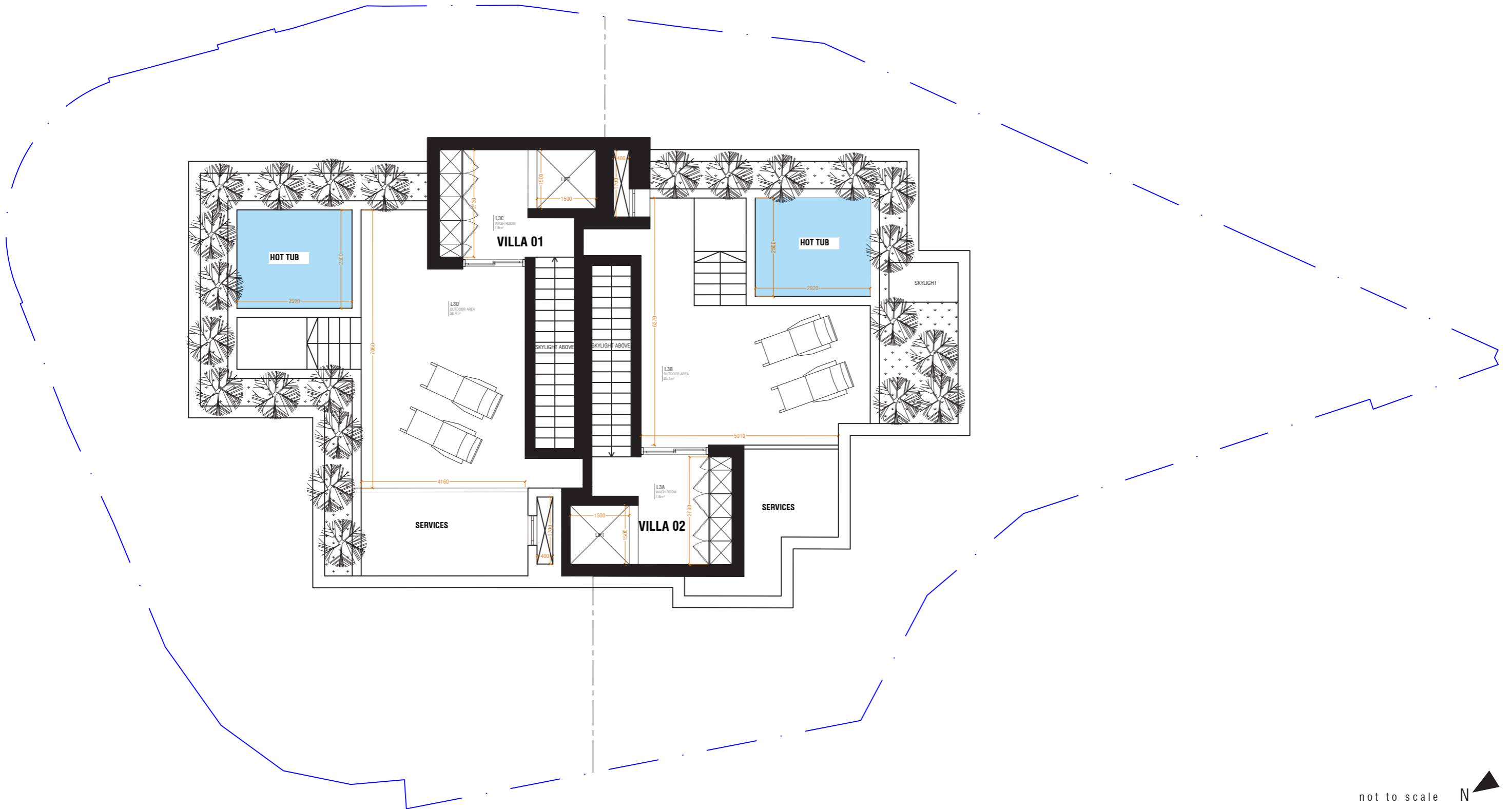


not to scale N



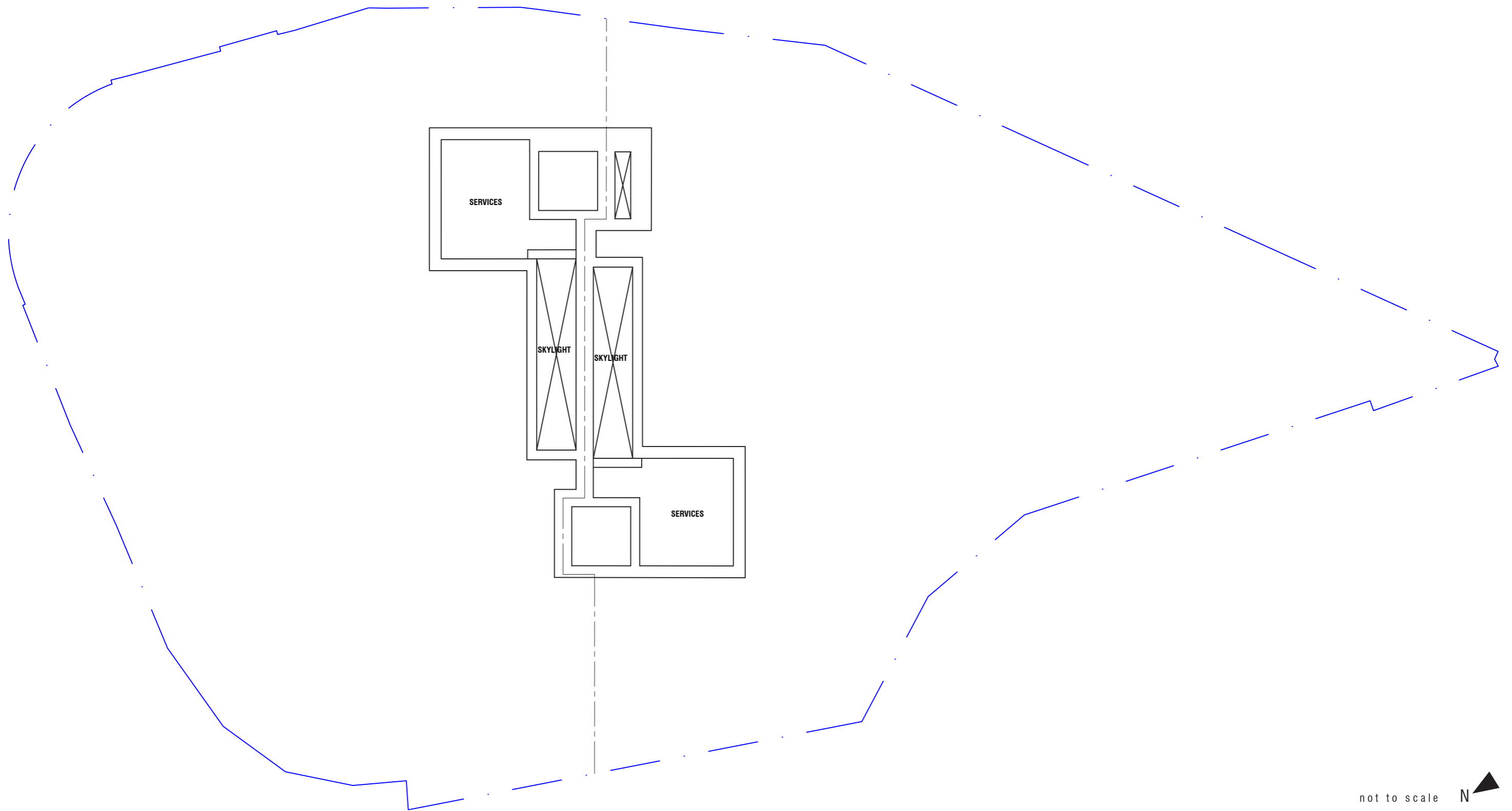


# LEVEL 3



not to scale N

# LEVEL 4



not to scale N





3DM Architecture  
triq il-furnara, zone 4  
central business district  
birkirkara, cbd4040, malta  
+35627017144  
3dm@3dm.mt