



M V 1 3

- proposal
- company profile
- location
- block plan
- case studies
- program
- methodology
- material palette
- visuals
- plans
- 3dm contact

The intent of this document is to present the design for luxury fully detached villas located in Triq il-Kappella Ta Santa Marija, Naxxar. The villas were conceived as a series of monolithic blocks placed next to each other, from which a series of subtractions were created, forming apertures, terraces and indentations. Each villa is designed in the same style, but changes in the way the subtractions are made creates a playful interpretation for each villa whilst still reading as one architectural composition.



3DM ARCHITECTURE

3DM Architecture is an architectural design studio based in Malta that has been active in the field of architecture and interior projects. We are a forward-thinking team that combines knowledge, experience, and creativity in our work.

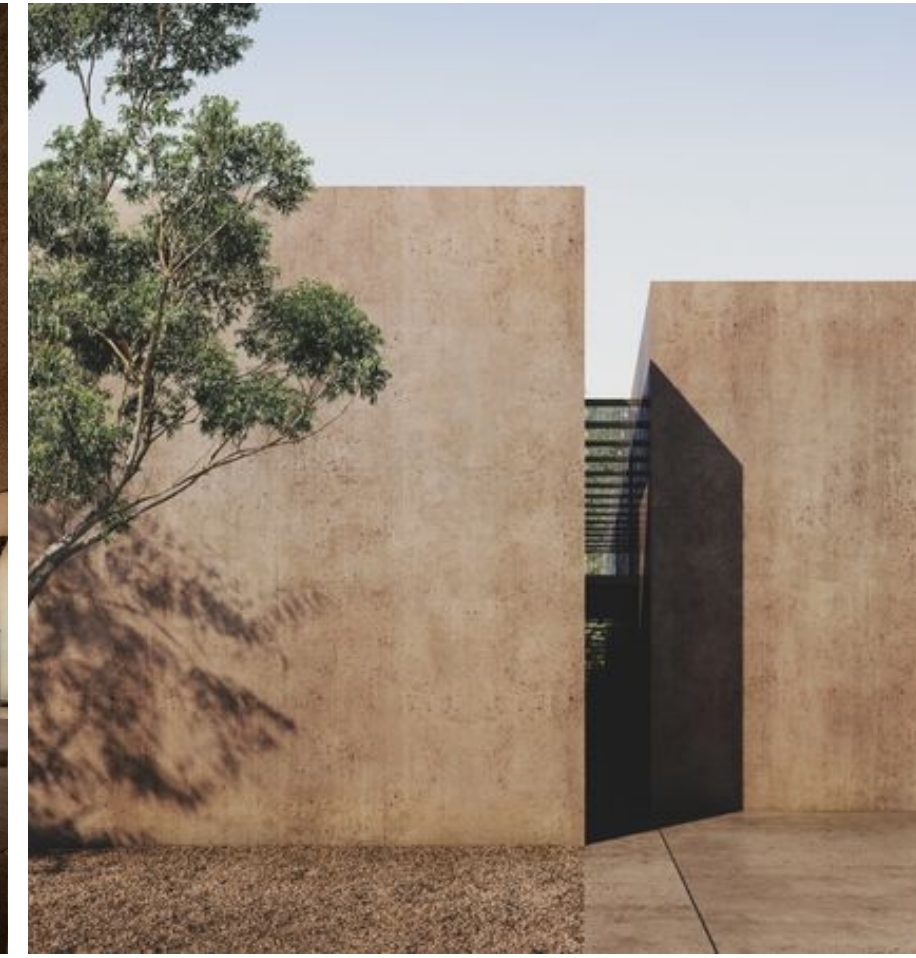
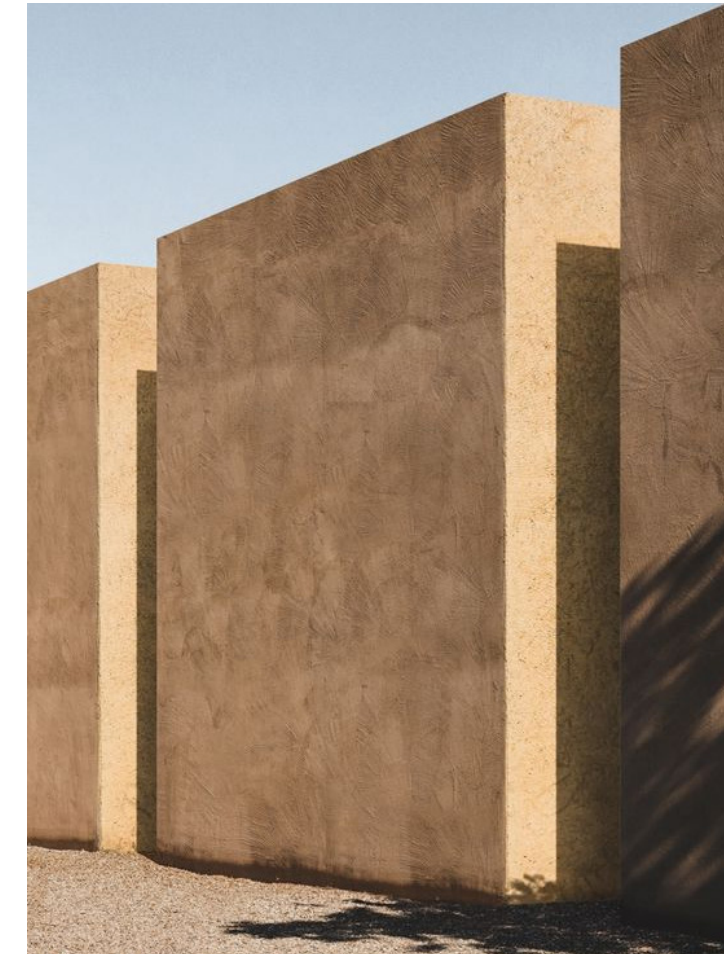
We at 3DM believe in a comprehensive holistic design approach, which brings together different specialisations that are normally considered as separate. Our team pays close attention to detail when creating geometric forms, selecting materials, and when exploring the interplay of light and shadow.

Our projects are treated with utmost care, starting from their conceptual beginnings, throughout construction, and up to completion.

LOCATION



INTERNATIONAL EXAMPLES



PROGRAM



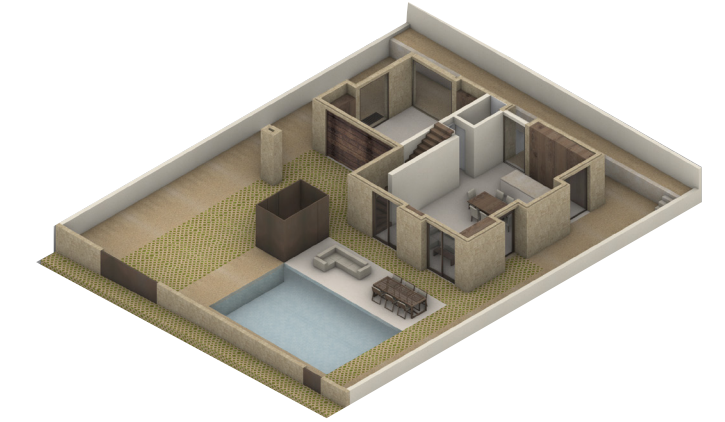
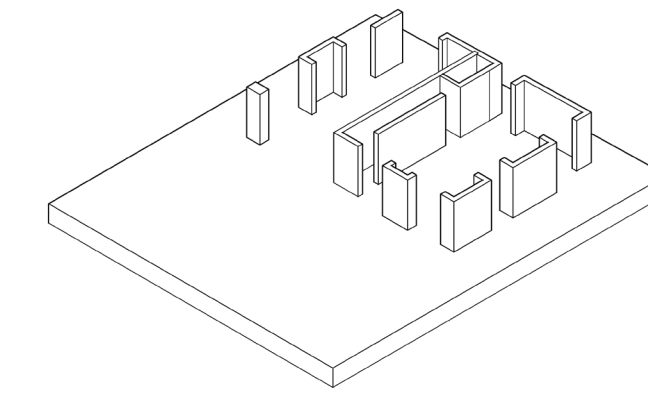
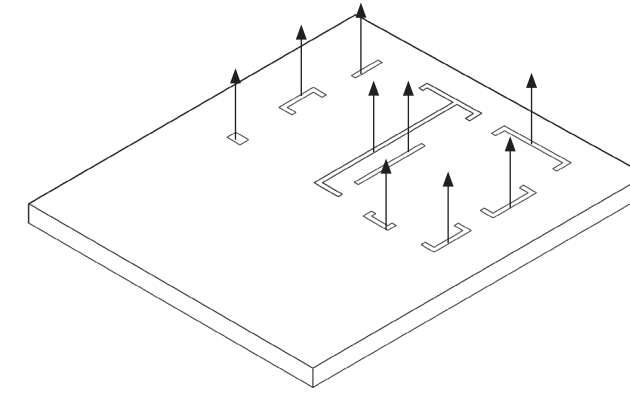
L2 hidden services

L1 master bedroom with ensuite
2 secondary bedrooms with ensuite
terraces

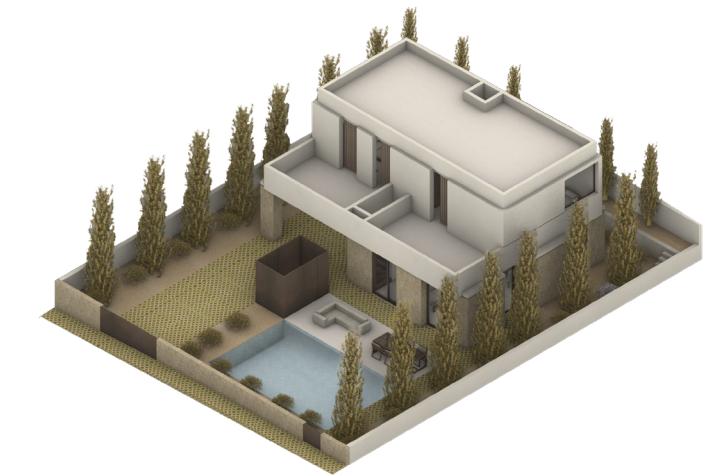
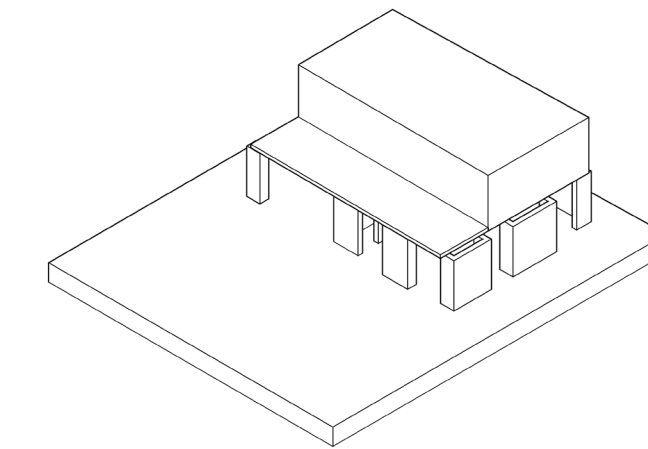
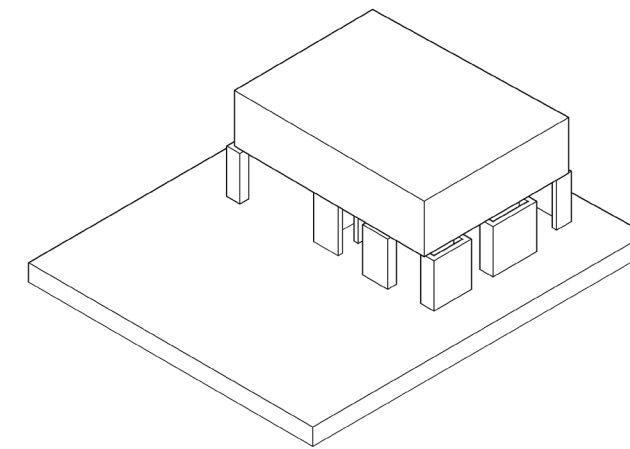
L0 kitchen | living | dining
guest bathroom
outdoor area with pool
outdoor bathroom
2 car garage

L-1 games room | cinema room
stores | service area
balance tank & reservoir

METHODOLOGY



L0 extrusion of volumes defined by functions



L1 reducing massing impact through:
- materiality and shadow gap detailing, creating a clear distinction between volumes
- reducing volume at first floor, providing bedrooms with terraces

MATERIAL PALETTE

L1 hydraulic lime plaster
sand coloured aluminium

L0 hardstone cladding
grass blocks flooring
rubble wall boundary
sand coloured aluminium





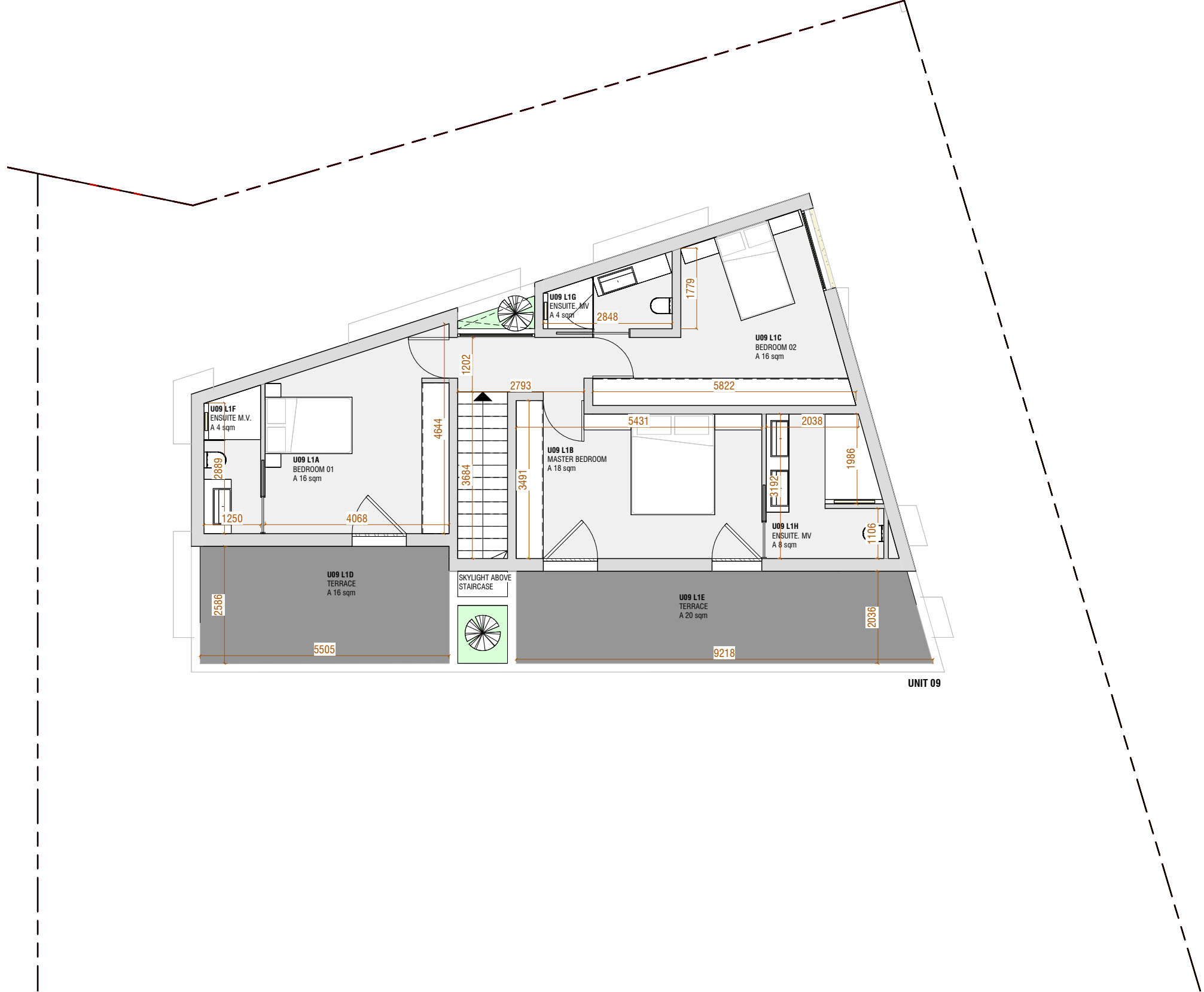
PLANS | UNIT 09 + 10

unit 09, level 0



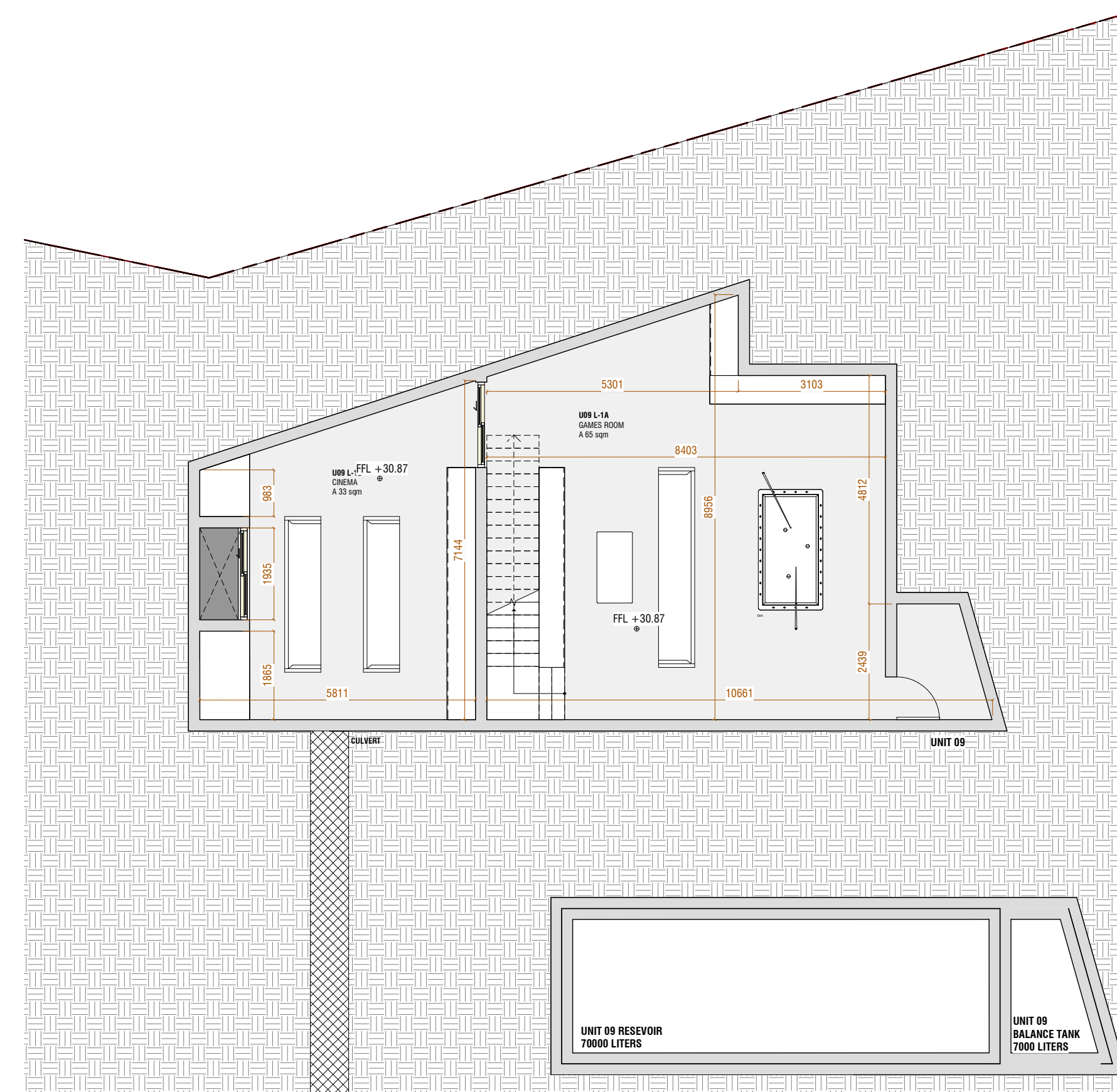
PLOT AREA UNIT 09	
NAME	AREA (sqm)
PLOT AREA	446
LANDSCAPE	259
OUTDOOR ANCILLARY FACILITY	6
POOL AND DECK AREA	69
TOTAL FOOTPRINT	119
FLOOR SPACE - UNIT 9	
NAME	AREA (sqm)
UNIT 9	
FLOOR SPACE LEVEL 0	111
FLOOR SPACE LEVEL 1	89
GRAND TOTAL	200

unit 09, level 1



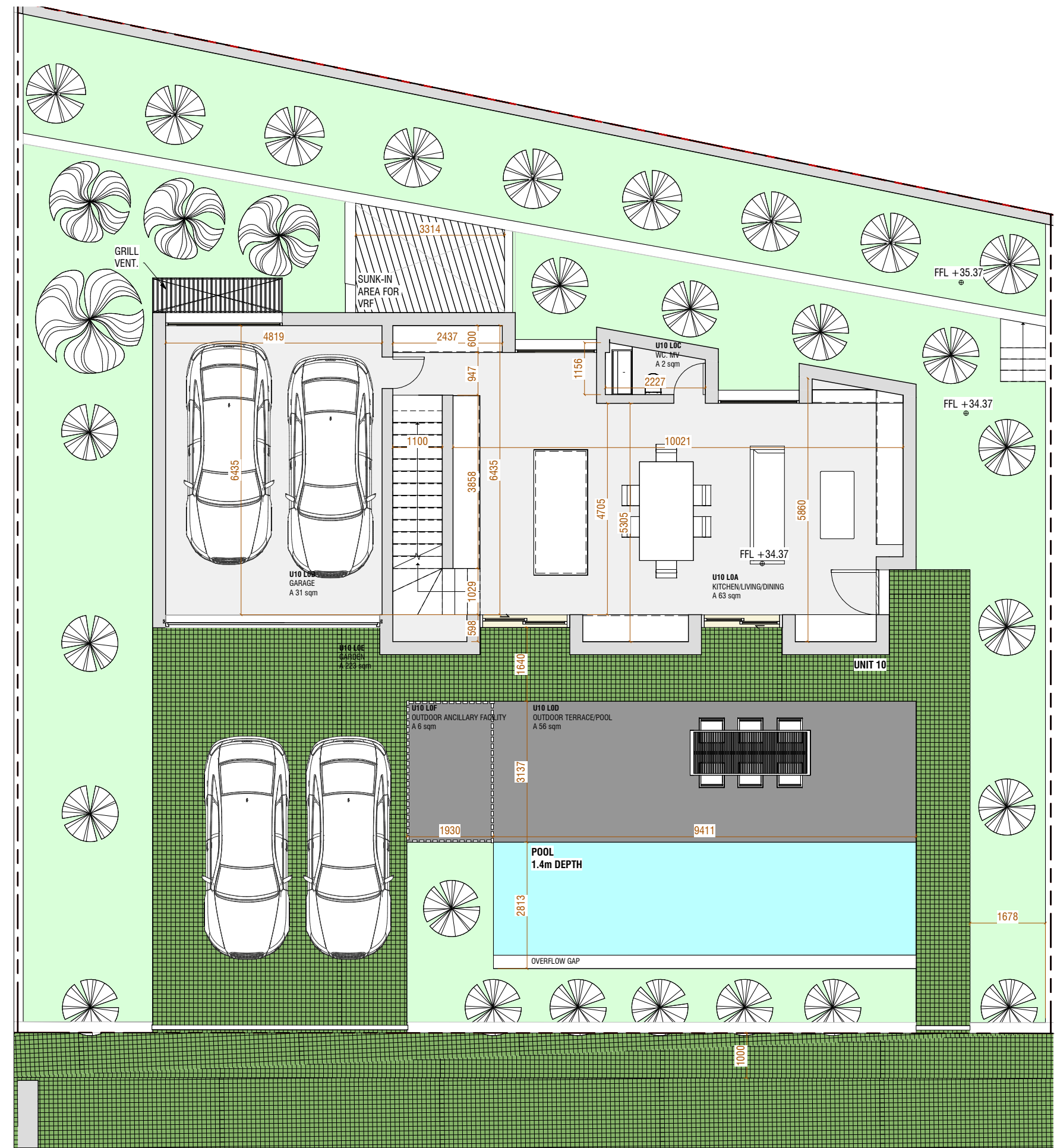
PLOT AREA UNIT 09	
NAME	AREA (sqm)
PLOT AREA	446
LANDSCAPE	259
OUTDOOR ANCILLARY FACILITY	0
POOL AND DECK AREA	68
TOTAL FOOTPRINT	119
FLOOR SPACE - UNIT 9	
NAME	AREA(sqm)
UNIT 9	
FLOOR SPACE LEVEL 0	111
FLOOR SPACE LEVEL 1	89
GRAND TOTAL	200

unit 09, level -1



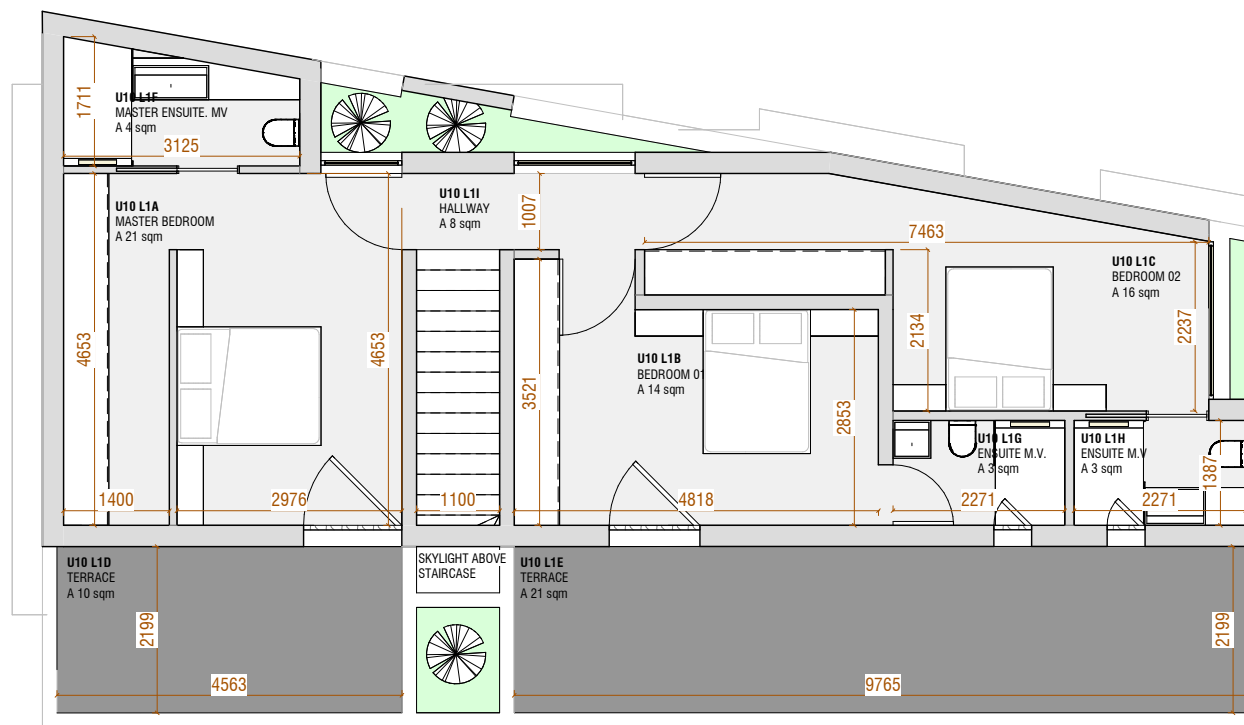
PLOT AREA UNIT 09	
NAME	AREA (sqm)
PLOT AREA	446
LANDSCAPE	259
OUTDOOR ANCILLARY FACILITY	0
POOL AND DECK AREA	68
TOTAL FOOTPRINT	119
FLOOR SPACE - UNIT 9	
NAME	AREA(sqm)
UNIT 9	
FLOOR SPACE LEVEL 0	111
FLOOR SPACE LEVEL 1	89
GRAND TOTAL	200

unit 10, level 0



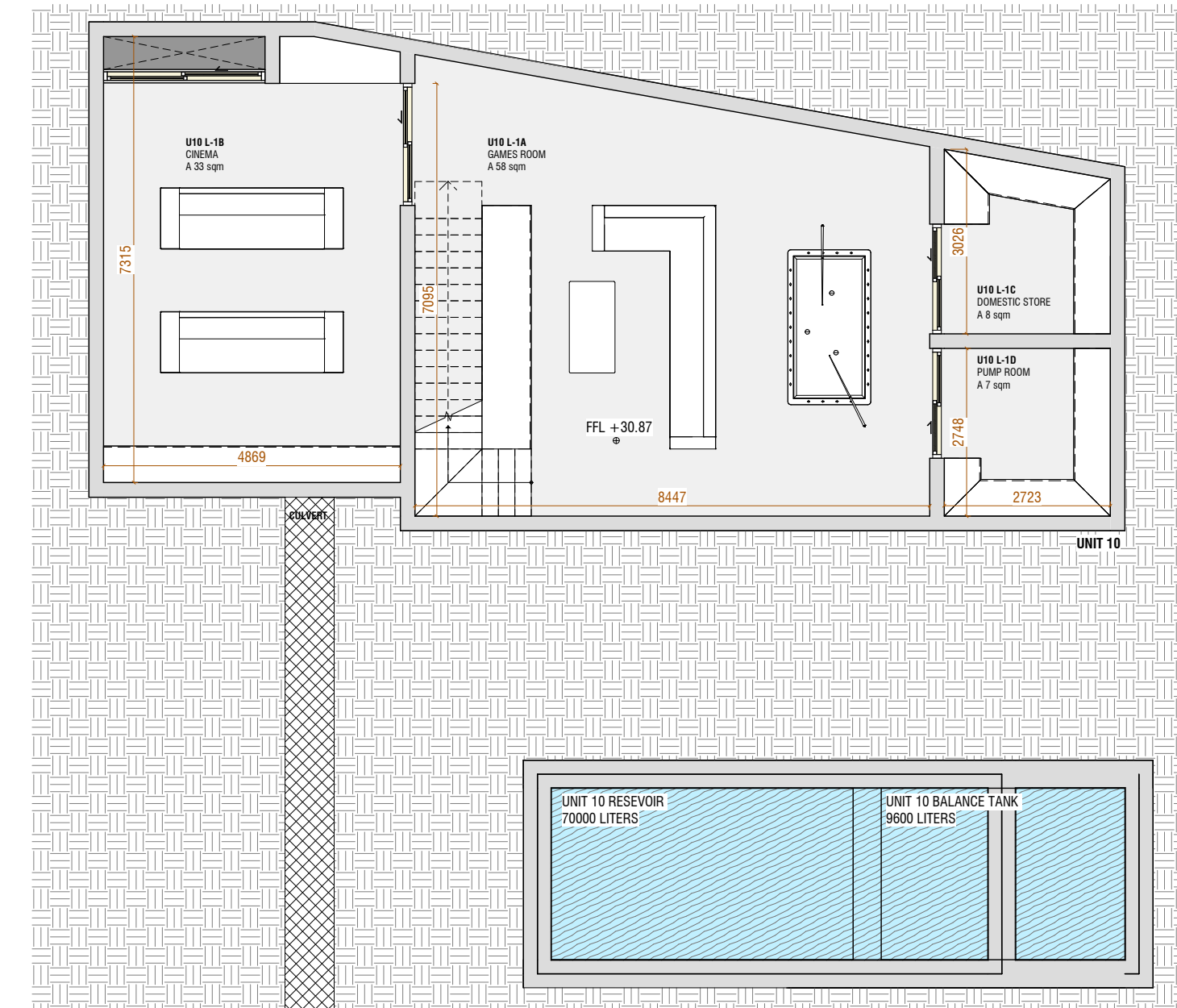
PLOT AREA UNIT 10	
NAME	AREA (sqm)
PLOT AREA	473
LANDSCAPE	298
OUTDOOR ANCILLARY FACILITY	6
POOL AND DECK AREA	56
TOTAL FOOTPRINT	148
FLOOR SPACE - UNIT 10	
NAME	AREA (sqm)
UNIT 10	
FLOOR SPACE LEVEL 0	114
FLOOR SPACE LEVEL 1	86
GRAND TOTAL	200

unit 10, level 1



PLOT AREA UNIT 10	
NAME	AREA (sqm)
PLOT AREA	473
LANDSCAPE	298
OUTDOOR ANCILLARY FACILITY	6
POOL AND DECK AREA	56
TOTAL FOOTPRINT	149
FLOOR SPACE - UNIT 10	
NAME	AREA (sqm)
UNIT 10	
FLOOR SPACE LEVEL 0	114
FLOOR SPACE LEVEL 1	86
GRAND TOTAL	200

unit 10, level -1



PLOT AREA UNIT 10	
NAME	AREA (sqm)
PLOT AREA	473
LANDSCAPE	298
OUTDOOR ANCILLARY FACILITY	6
POOL AND DECK AREA	56
TOTAL FOOTPRINT	149
FLOOR SPACE - UNIT 10	
NAME	AREA (sqm)
UNIT 10	
FLOOR SPACE LEVEL 0	114
FLOOR SPACE LEVEL 1	86
GRAND TOTAL	200



3DM Architecture
triq il-furnara, zone 4
central business district
birkirkara, cbd4040, malta
+35627017144
3dm@3dm.mt