



INTRODUCTION  
CONCEPT  
INTERNATIONAL EXAMPLES  
INTERVENTION METHODOLOGY  
PLANS  
VISUALS  
materials  
furniture  
detailing



## **UNIT NINE**

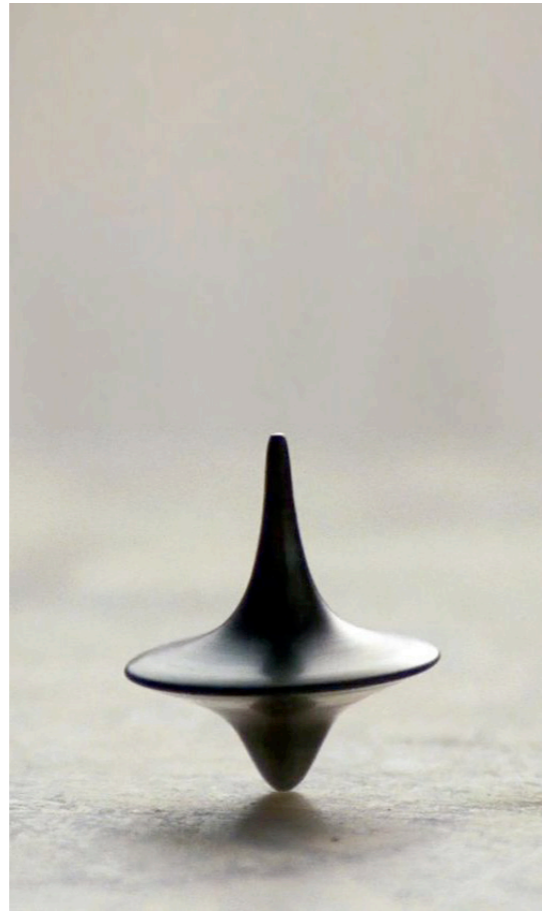
### **DEVELOPED DESIGN 01**

The intent of this document is to present the developed design for Unit Nine. The initial concept is developed based on the various requirements and overarching language of the project. A list of international examples, along with the methodology will be presented to explain how the proposal was developed. Plans and walk-through visuals will provide a better understanding about the schematics and volumetrics of the building and the interiors.





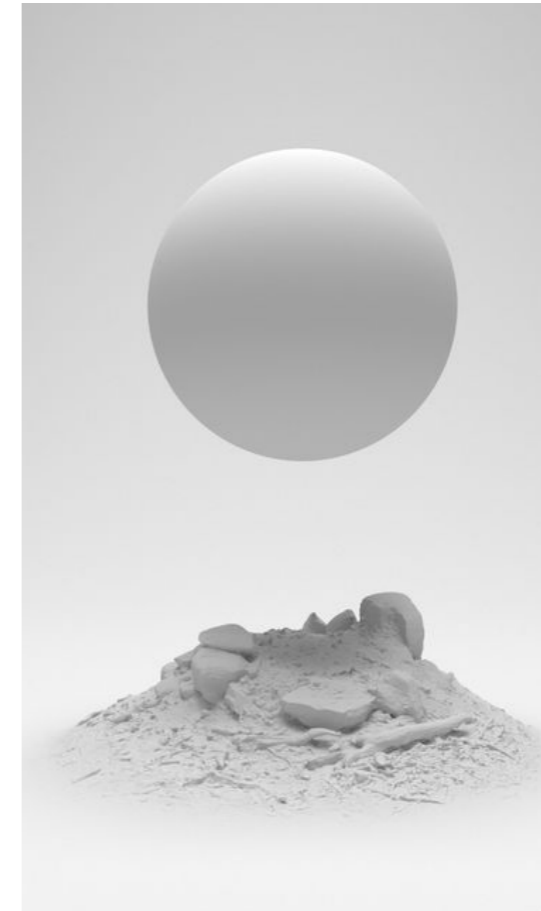
## CONCEPT



**Balance** – *A harmony of design and proportions – a situation where different elements relate perfectly to each other. 'A continuous language throughout all spaces'*



**Purity** – *Something perfectly in tune, containing nothing else but itself.*



**Timeless** – *not affected by the passage of time or changes in fashion.*



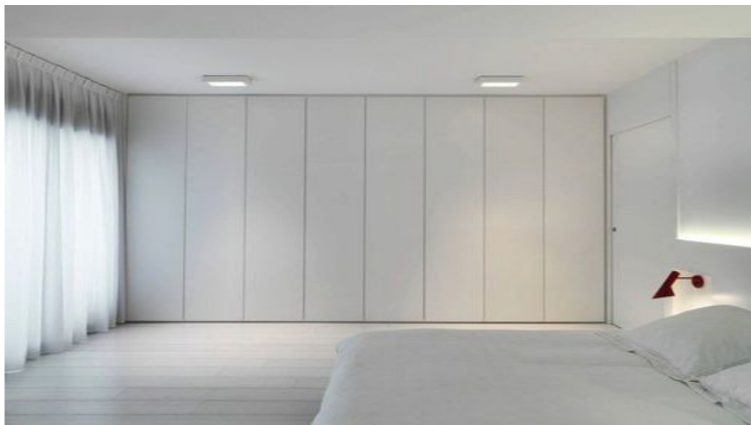
CONCEPT - ATMOSPHERE



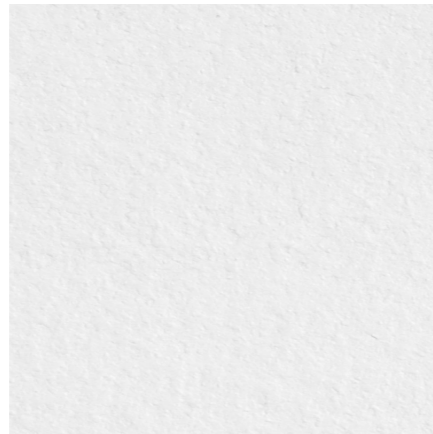
CONTRAST IN MATERIALS

Light and white materials as wood and plaster are contrasted with darker and heavier tones as stone and fabric, achieving with them a balance between a light and spacious space with heavier elements that give character and prominence to a specific place and serene atmosphere. Materials will be used as a common language to visually organize the space according to the uses while keeping it a cohesive architectural canvas.

FURNITURE as integration elements combined with different light temperatures.



# MATERIALS



**MATTE WHITE PLASTER**  
wall finishes



**MATTE WHITE WOOD**  
joinery finishes



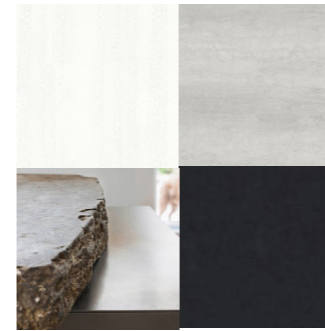
**PIETRA DI SAVOIA PERLA**  
interior/exterior flooring



**PIETRA DI SAVOIA GRIGIA**  
interior/exterior flooring

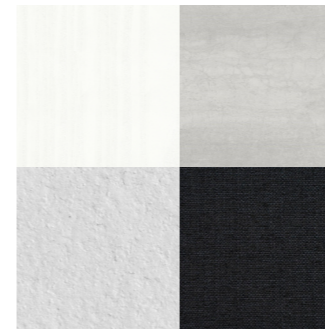


**LIGHTNING**  
Lighting temperatures going from 2700K - 4000K up to 5500K



**KITCHEN AREA**  
finishes

Using a wood in a similar colorization to the flooring allow us to integrate the furniture into the architecture and elongate the space while creating a focal point from the main door. To create contrast, we choose dark stone for the island. Accents of black are introduced in the Kitchen sink faucets, stools and home appliances.



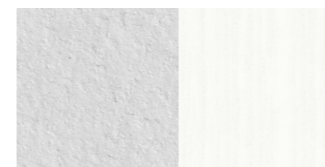
**LIVING AREA**  
furniture/fabrics

Dark soft fabrics add warmth to the space while give us the opportunity of customize the space through rugs, pillows, etc. The white wood joinery and black sleek accents in furniture relate to the kitchen and tie the level design, making the whole space feel like one.



**DINING AREA**  
finishes

Designed as an area of contrast, the dark materials in this area give a core character to the level, delimiting the space to its function.



**MASTER BEDROOM**  
finishes

Following the atmosphere of ground floor, similar materials are applied to the interior of the room.



**GARDEN**

Mediterranean muted green plants as a background with matte black sleek furniture and soft fabrics make of this space an elegant and modern relax area, while merging interior and exterior through color and shapes.



INTERNATIONAL EXAMPLES - L00 - KITCHEN



KITCHEN CABINETS

Kitchen is integrated in the architecture by a wood finish similar to the flooring tile, making the space flow and drawing the attention to the back, elongating the space.

Push to open turn the kitchen into an architectural sleek volume, keeping it minimal and clean.



KITCHEN ISLAND

A white wood kitchen island stands out, connecting the living and kitchen through materiality. A rough and heavy surface contrasts with the pure and minimalist volume.





## INTERNATIONAL EXAMPLES - L00 - LIVING ROOM



### LIVING ROOM

The living room provides a cozy atmosphere in the access composed of white tones that contrast with the dark colors of the sofa.

We propose to have a sofa with an organic overall design as a centerpiece and armchairs with black accent details to connect the spaces.

Pops of color can be introduced by the use of fabrics -such as rugs, blankets or pillows-, light fittings and decoration.

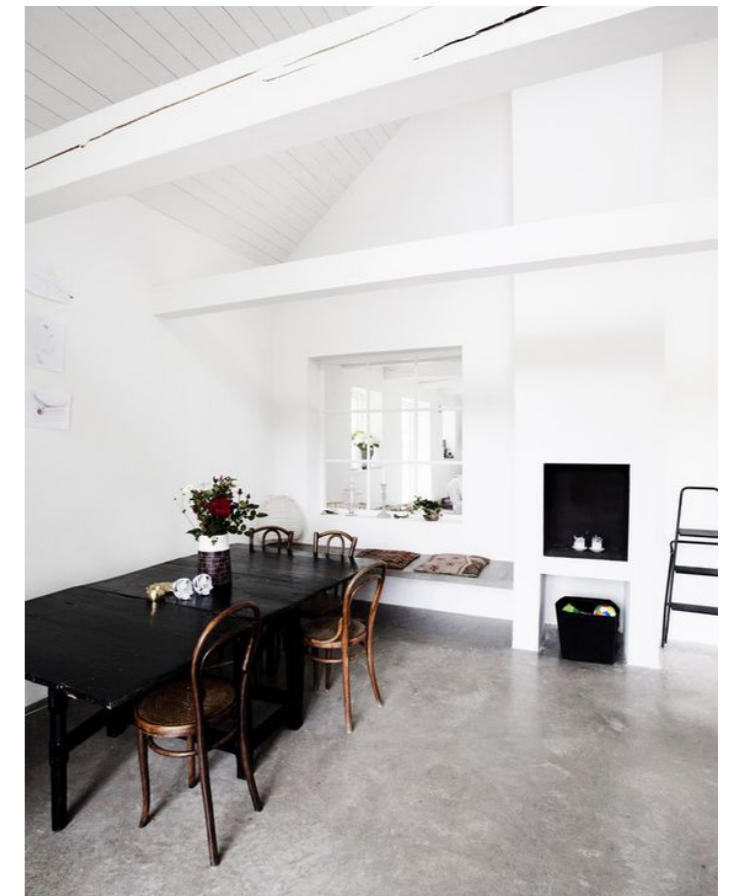
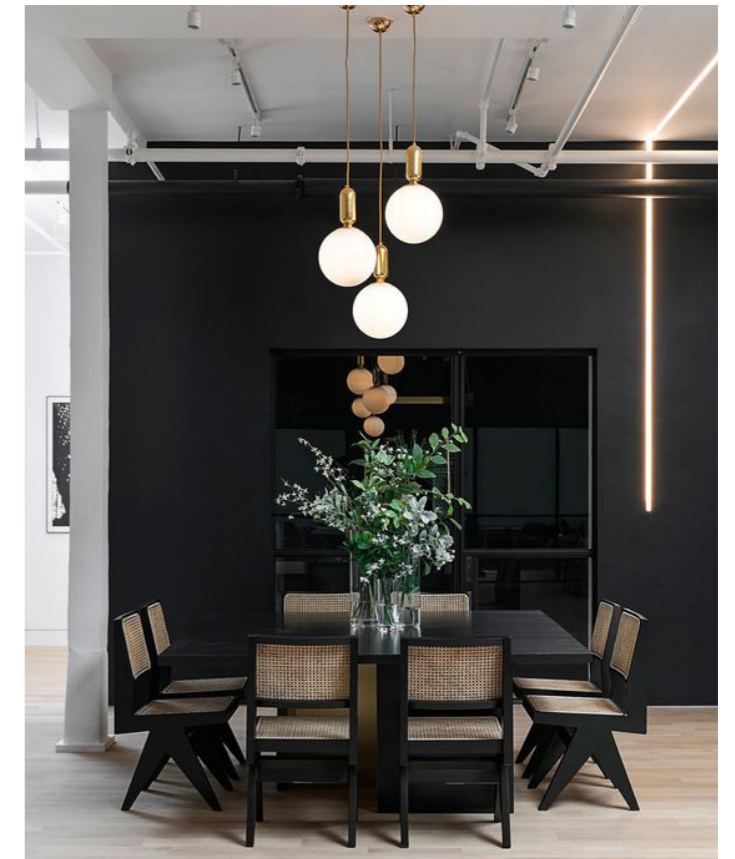
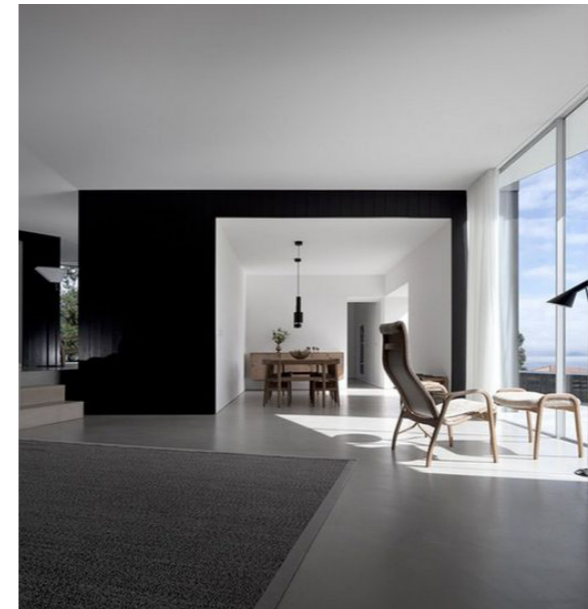
As a complement, in the hall there is a volume made in light wood and dark glass, that works as a cloakroom, library and desk.

TV unit is to be custom made in light wood laminate on MDF and includes a 50" TV with concealed wiring and open shelves in white wood finish with optional lighting for displaying of decorations and personal collection.



### DINING

The dining room is proposed as a core that articulates the level 0 thanks to the contrast of colors as a dark element in the middle of a light and minimalist space, in addition to being composed of more organic and diferents forms to the project.





**MASTER BEDROOM**

In level 1, the Master Bedroom follows the same language used in level 0, using pure white elements in its composition, accompanied in turn by warm lighting that creates a more comfortable atmosphere.



INTERNATIONAL EXAMPLES - L02 - TERRACE



**OUTDOOR AREA AND POOL**

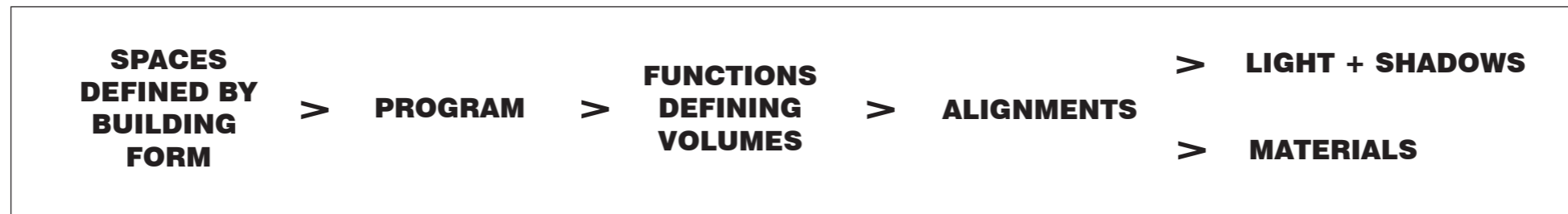
Overflowing and with a long bench to relax, this pool is conceived as the core of the outdoor living space.

It is proposed to have the exterior flooring in a similar tile to the interior in order to avoid visible cuts within the visual experience and to help integrate the exterior into the interior space.

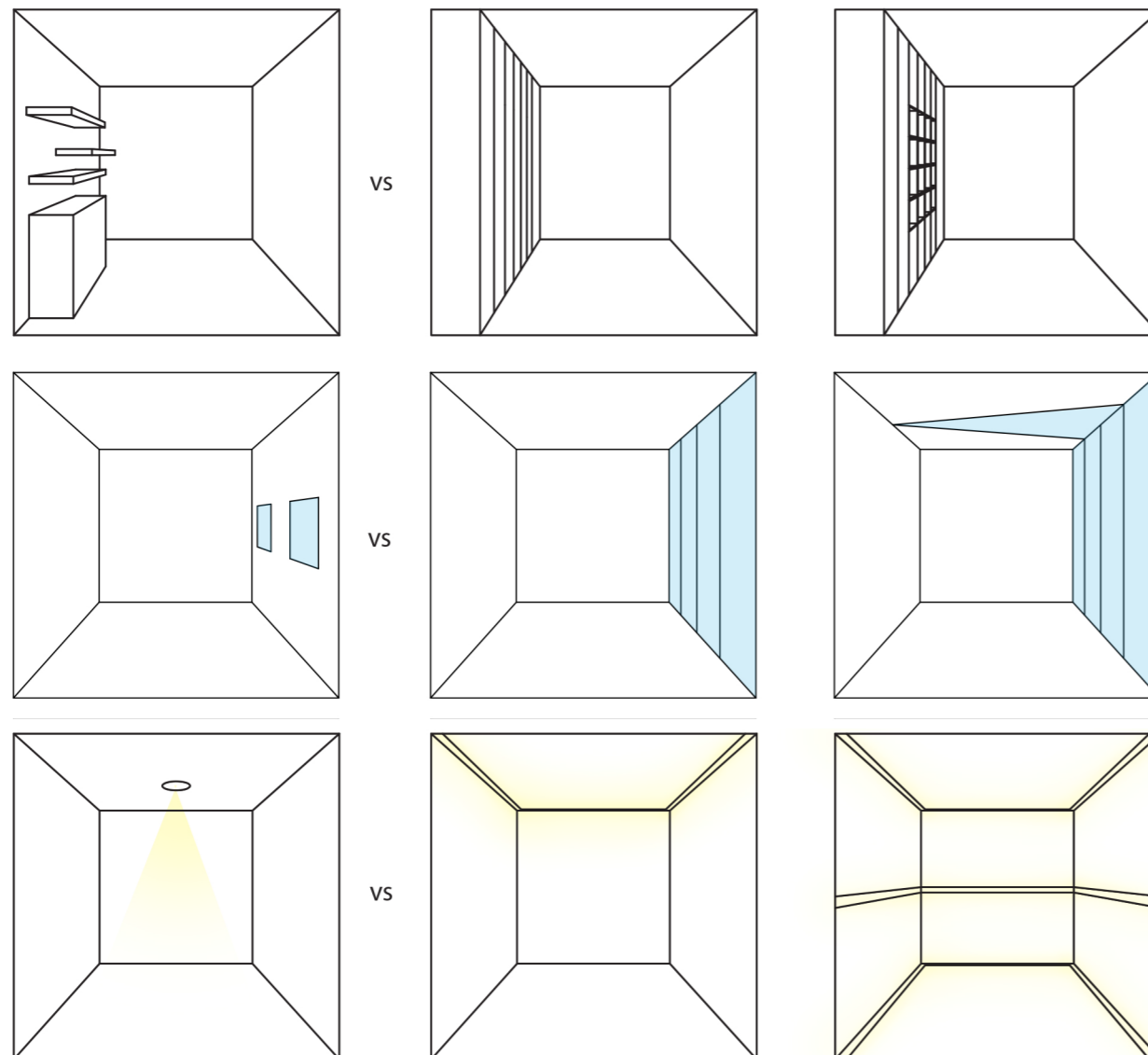
Pool is to be finished in plaster, which is even and smooth, which allows the natural color and movement of the water to be the real focal point.

Technical details such as draining are integrated within the design -see slot drain picture.





The intervention for the interiors follows the understanding of the required spaces and the necessities of the users that will be using the spaces. Through the spaces defined by the brief, a program is organised and respective volumetric spaces are assigned accordingly. Through the use of reflective/non-reflective materials, lighting and shadows, all elements are brought together through a rigid language of alignments.



**SOLID VOLUMES**

- The use of volumes in the interiors allows for a number of advantages such as:
  - Storage space (which can be hidden out of sight), since floor to ceiling height is used to its potential
  - Services: to be used for the passing & position of certain services (such as HVAC, Lighting, ELVs)
  - Less visual clutter, allowing an experience of the architecture itself
- Volumes can be made out of the architecture itself (the constructed walls) or built out of gypsum or joinery

**APERTURES**

- Having floor to ceiling apertures allows the interior spaces to be infiltrated with natural light whilst allowing for unobstructed views of the natural landscape.
- By opening up the ceiling using skylights, the interior spaces change completely due to sun light and various shadows created, this is also highlighted given the actual architectural design of the skylights and how these work with the rest of the built fabric.

**DIFFUSED LIGHT**

- By lighting a space from its extremities, good levels of lighting can be achieved without having concentric spots of harsh light in a space.
- Lighting is generally positioned in such a way where natural light floods the interiors during the day. This is done so that one can achieve a cohesive lighting experience both during the day and night.
- The concept can be applied on different heights of a wall (ceiling, floor, etc.)



# VISUALS

MATERIALS  
FURNITURE  
DETAILING



VISUAL - L00 - LIVING AREA



VISUAL - L00 - DINING AREA TO LIVING





VISUAL - L00 - DINING AREA TO KITCHEN



VISUAL - L00 - DINING



VISUAL - L01 - MASTER BEDROOM



VISUAL - L02 - TERRACE





3DM ARCHITECTURE

3DM Architecture  
triq il-furnara, zone 4  
central business district  
birkirkara, cbd4040, malta  
+35627017144  
[3dm@3dm.mt](mailto:3dm@3dm.mt)